



Cut & Bent REBAR

BRC West Indies Ltd, Cane Garden, St.Thomas BB22118, Barbados.

Tel: (246)425-0371 Sales Fax: (246)424-7247 Off.Fax: (246)425-2941 Email: brc@caribsurf.com Web: www.brcwestindies.com

FOOTING U-LINK BARS

Std. Stock Sizes:

from 12mm High Tensile Rebar

4" x 18" x 4"

4" x 20" x 4"

From as low as \$2.12 Each

Also available in 12mm American Standard High Tensile Steel and 10mm to 32mm British Standard sizes

U-shaped link bent typically from 12mm High Tensile Rebar and is one of the steel reinforcement components used for concrete strip footings (a continuous strip of concrete that serves to spread the weight of a load-bearing wall across the foundation material).



Typical Spaced at 12" Centres



BEAM STIRRUPS

Std. Stock Sizes:

Squares from 8mm Mild Steel:

4"x4" 5"x5" 6"x6"

Rectangles from 8mm Mild Steel:

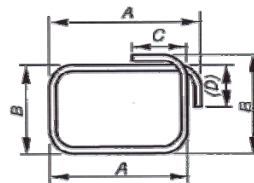
4"x5" 4"x6" 4"x7"

4"x8" 4"x9" 4"x10"

From as low as \$0.76 Each

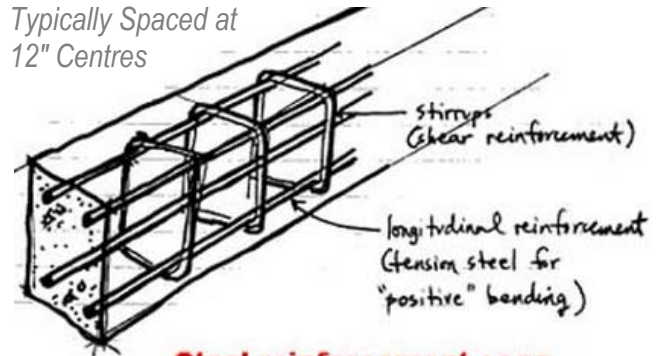
Also available in High Tensile & Mild Steel from 8mm (5/16"), 10mm (3/8") and 12mm (1/2") bars

SHAPE CODE 51



Stirrups are rectangular or square shaped links bent from High Tensile or Mild Steel Rebar and provides the shear reinforcement in typical concrete beams. e.g. Ring-beams & Floor Beams.

Typically Spaced at 12" Centres



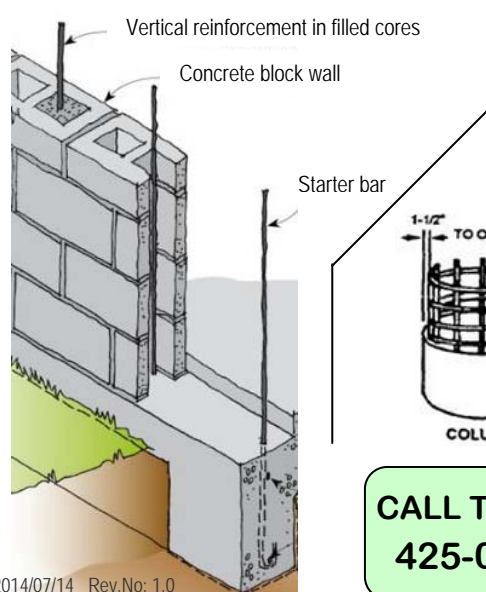
Steel reinforcement cage

STARTER BARS

in 12mm High Tensile Rebar
6" x 48" (typical size)

From as low as \$5.07 Each

A steel reinforcement bar with a bent end for anchorage that is embedded in the concrete footing and projects upward, providing the starting point for vertical reinforcement of walls.



Rev. Date: 2014/07/14 Rev.No: 1.0

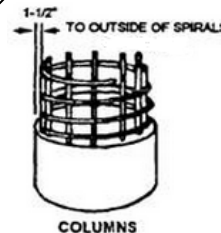
SPIRAL REINFORCEMENT

A continuous helical bar used to confine longitudinal reinforcement in reinforced concrete columns. It provides support in the transverse direction and prevents the column from barreling.

Please provide us with the following information:

- diameter of Steel
- diameter of Spiral
- number of turns & distance between turns

OR length of spiral and distance between turns



**CALL TODAY
425-0371**



C = no. of turns



Min. diameter - 8"